

657 Fieldstone Drive

4 BEDROOMS | 2 1/2 BATH | 2,592 SQ FT
\$399,000



PINE HILL
Building Co.



Introducing the Asheville home plan featuring the Manor elevation. This updated classic exterior features a wrapped front porch, metal roof, black windows and an 8' painted front entry door. The 2-Story foyer and open staircase invites you into this comfortable and livable home where every room has a purpose. The home office provides privacy and functionality whether you are working from home or homeschooling the kids.

The Meadows at Bachman Run features meandering walking trails along the Bachman creek and open green spaces. This suburban neighborhood has walkability to downtown Annville with its quaint movie theatre, coffee shops, restaurant and brewery. Escape the city and enjoy a little slice of heaven in Lebanon County.

HIGHLIGHTS OF THE HOME:

- 8' Front Entry Door
- Deep Front Porch
- Granite Countertops
- Cast Iron Farmhouse Sink
- Soft-Close Drawers & Doors on all cabinetry
- Staircase feature wall with Shiplap
- Wooden Bench with Hooks in Drop Zone
- Fireplace with shiplap to the ceiling and wooden mantel
- Luxury Vinyl Plank flooring
- Dedicated Home Office

100 HIGHLANDS DRIVE

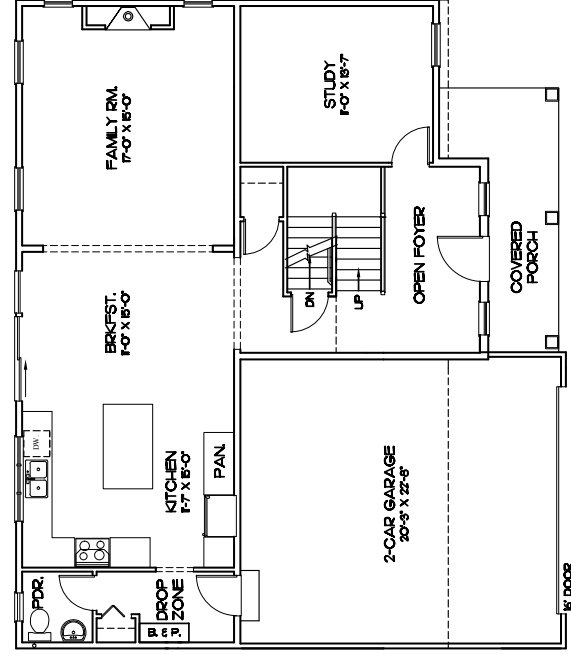
SUITE 209

LITITZ, PA 17543

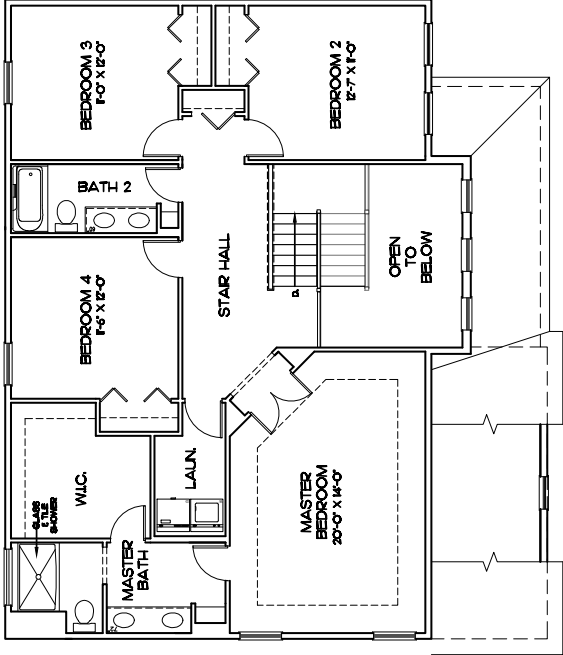
INTEGRITY | PRIDE | PASSION

717-807-7500

WWW.PHBCHOMES.COM



FIRST FLOOR PLAN / 9' CEILINGS



SECOND FLOOR PLAN / 8' CEILINGS

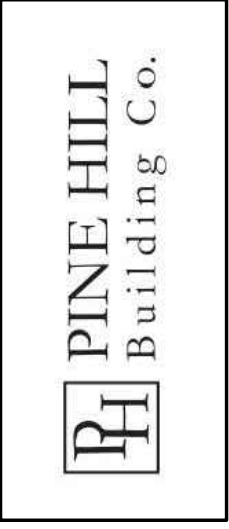


ASHEVILLE | the Manor

ALL AREA DIMENSIONS ARE APPROXIMATE. FLOOR PLANS AND ELEVATIONS MAY SHOW OPTIONAL ITEMS NOT INCLUDED IN THE STANDARD PRICE. WE RESERVE THE RIGHT TO IMPROVE THE PLANS BY REVISING THE SPECIFICATIONS AND DIMENSIONS WITHOUT NOTICE.

THESE PLANS ARE THE PRIVATE PROPERTY OF PINE HILL BUILDING CO. LLC. NO PART OF THESE PLANS MAY BE REPRODUCED OR WHOLE, WITHOUT THE EXPRESSED WRITTEN CONSENT OF PINE HILL BUILDING CO. LLC. IS STRICTLY PROHIBITED.

Asheville Plan Information	
FIRST FLOOR	1141
SECOND FLOOR	1451
BASEMENT (finished area)	0
TOTAL S.F.	2592
GARAGE S.F.	458
# BEDROOMS	4
# BATHROOMS	2.5



MEADOWS at BACHMAN RUN
HOMESITE 88