

# 649 Fieldstone Drive

4 BEDROOMS | 2 1/2 BATH | 2,505 SQ FT  
\$394,000



PINE HILL  
Building Co.



Introducing the Raleigh home plan featuring the Homestead elevation. This farmhouse style home is what dreams are made of with stained posts, beams, barn door, fireplace mantel and rustic openings throughout the home. The 2-Story foyer and open staircase washes you in natural light as you enter the home. This truly open floor plan was designed with family and functionality in mind. We hope you like it as much as we do!

The Meadows at Bachman Run features meandering walking trails along the Bachman creek and open green spaces. This suburban neighborhood has walkability to downtown Annville with its quaint movie theatre, coffee shops, restaurant and brewery. Escape the city and enjoy a little slice of heaven in Lebanon County.

#### HIGHLIGHTS OF THE HOME:

- 8' Front Entry Door
- Deep Front Porch
- Quartz Countertops
- Cast Iron Farmhouse Sink
- Soft-Close Drawers & Doors on all cabinetry
- Wooden Bench with Hooks in Entry
- Rustic features - cased openings, beams and barn door
- Fireplace with shiplap to the ceiling and wooden mantel
- Luxury Vinyl Plank flooring
- Dedicated Home Office

100 HIGHLANDS DRIVE

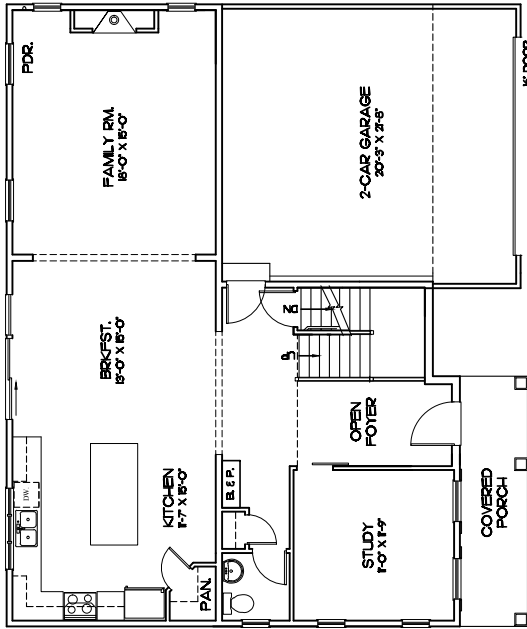
SUITE 209

LITITZ, PA 17543

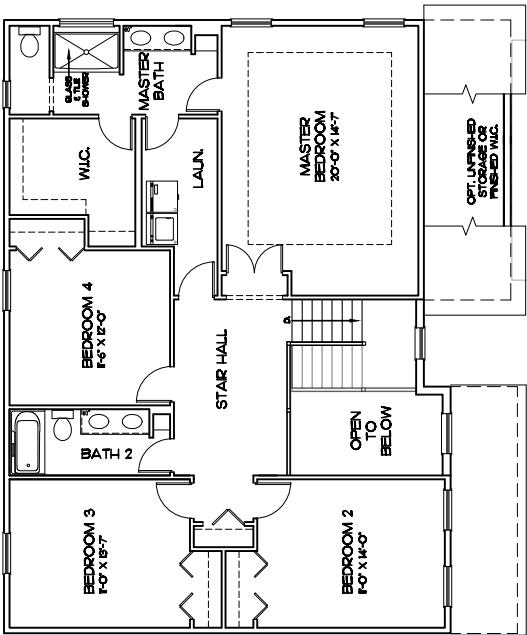
INTEGRITY | PRIDE | PASSION

717-807-7500

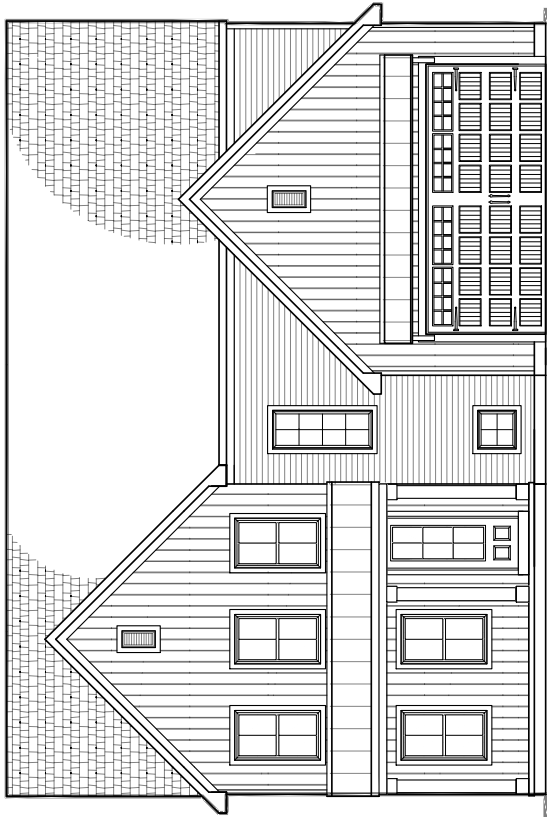
WWW.PHBCHOMES.COM



FIRST FLOOR PLAN / 9' CEILINGS



SECOND FLOOR PLAN / 8' CEILINGS



FRONT ELEVATION

the Raleigh



MEADOWS at BACHMAN RUN  
HOMESITE 87

ALL AREA DIMENSIONS ARE APPROXIMATE. FLOOR PLANS AND ELEVATIONS MAY SHOW OPTIONAL ITEMS NOT INCLUDED WITH BASE PRICE. THE BUILDER RESERVES THE RIGHT TO MAKE CHANGES TO THE DESIGN, SPECIFICATIONS AND DIMENSIONS WITHOUT NOTICE.

THESE PLANS ARE THE PRIVATE PROPERTY OF PINE HILL BUILDING CO., LLC. ANY USE OR REPRODUCTION OF THESE PLANS IN PART OR WHOLE WITHOUT THE WRITTEN CONSENT OF PINE HILL BUILDING CO., LLC IS STRICTLY PROHIBITED.

Raleigh Plan Information	
FIRST FLOOR	1165
SECOND FLOOR	1340
BASEMENT (finished area)	0
TOTAL S.F.	2505
GARAGE S.F.	442
# BEDROOMS	4
# BATHROOMS	3.5