

RALEIGH

4 Bedroom | 2½ bath | 2,505 s.f.



THE CLASSIC



THE CRAFTSMAN

shown w/ optional garage door



THE STATESMAN

shown w/ optional front door

shown w/ optional metal roof at porch & pent roofs



THE FARMHOUSE

shown w/ optional garage door

shown w/ optional front door



THE HOMESTEAD

shown w/ optional garage door

shown w/ optional front door



THE MANOR

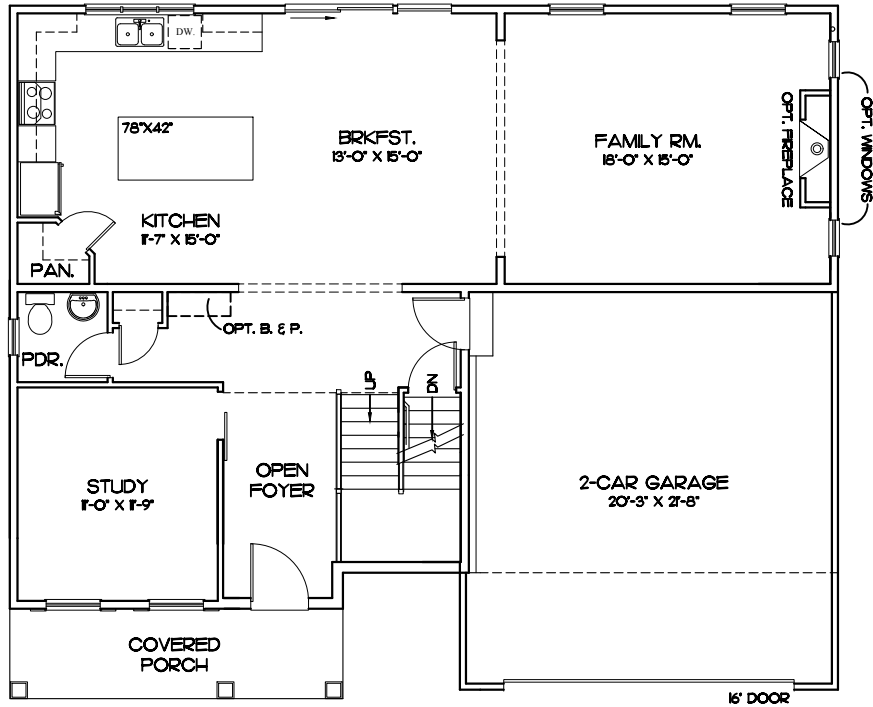
shown w/ optional garage door

shown w/ optional front door

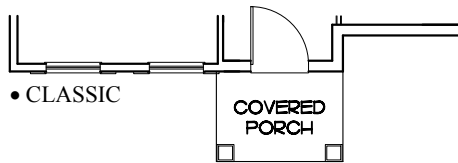
shown w/ optional metal roof

RALEIGH

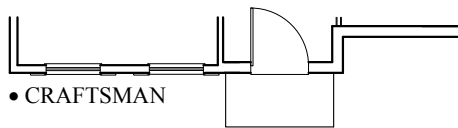
1st Floor



- MANOR
- FARMHOUSE
- STATESMAN
- HOMESTEAD

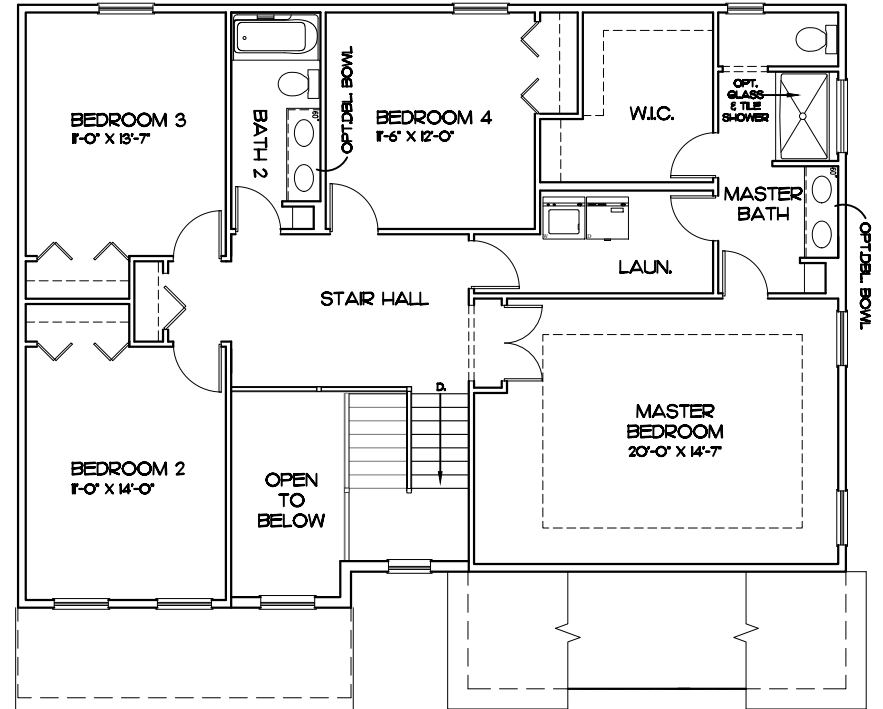


- CLASSIC

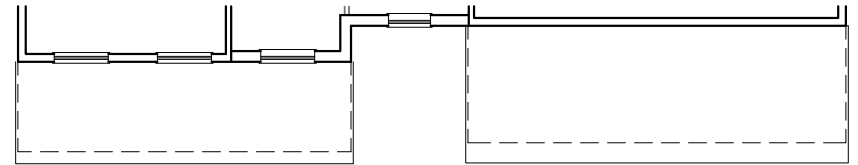


- CRAFTSMAN

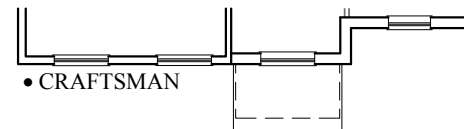
2nd Floor



- CLASSIC
- MANOR
- STATESMAN
- HOMESTEAD



- FARMHOUSE



- CRAFTSMAN

Raleigh Plan Information

| | |
|--------------|------|
| FIRST FLOOR | 1165 |
| SECOND FLOOR | 1340 |
| GARAGE S.F. | 442 |