

ASHEVILLE

4 Bedroom | 2½ bath | 2,592 s.f.



THE CLASSIC



THE STATESMAN
shown w/ optional garage door



THE CRAFTSMAN
shown w/ optional garage door
shown w/ optional front door



THE FARMHOUSE
shown w/ optional garage door



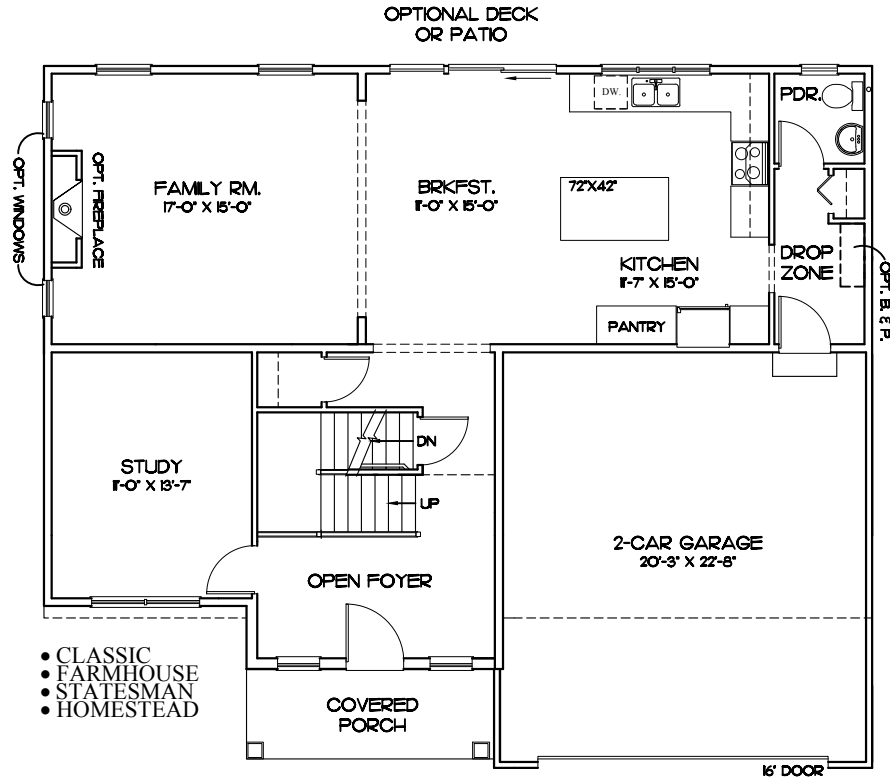
THE HOMESTEAD
shown w/ optional garage door



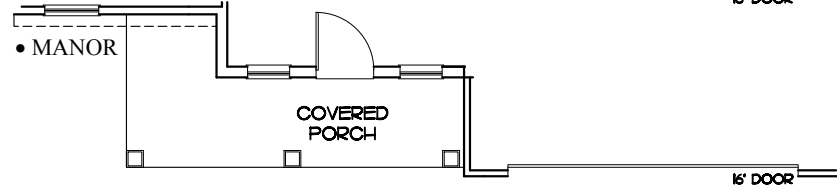
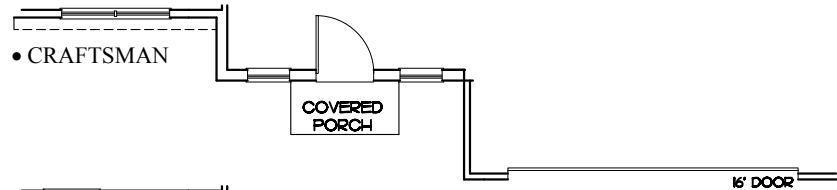
THE MANOR
shown w/ optional garage door

ASHEVILLE

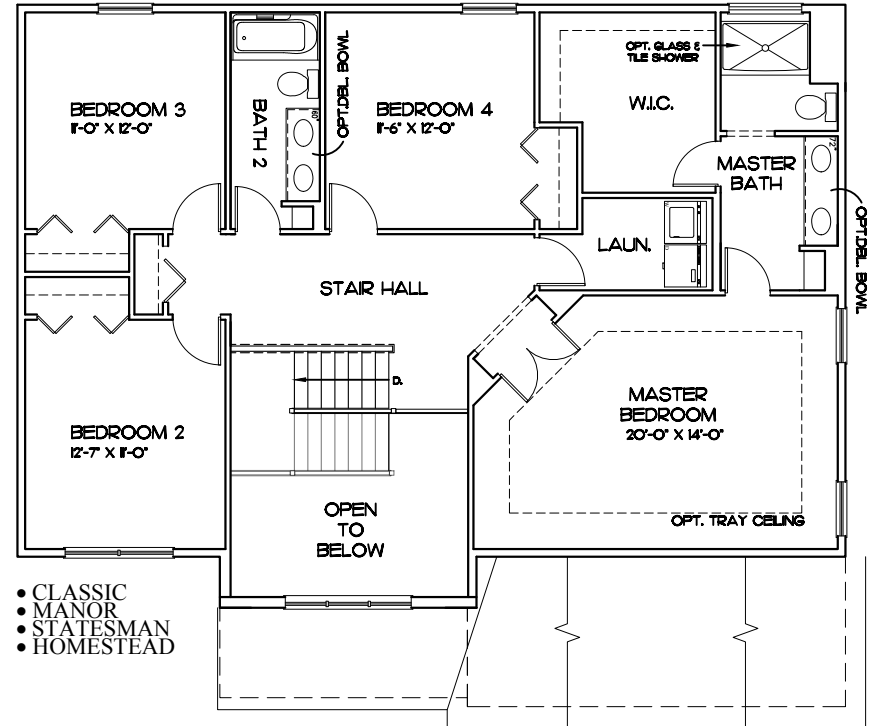
1st Floor



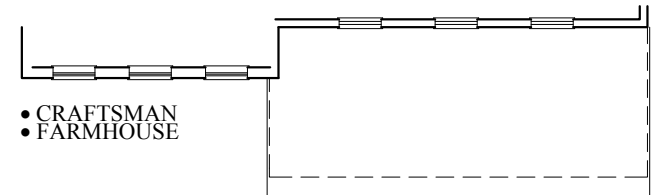
- CLASSIC
- FARMHOUSE
- STATESMAN
- HOMESTEAD



2nd Floor



- CLASSIC
- MANOR
- STATESMAN
- HOMESTEAD



- CRAFTSMAN
- FARMHOUSE

ALL AREA DIMENSIONS ARE APPROXIMATE. FLOOR PLANS AND ELEVATIONS MAY SHOW OPTIONAL ITEMS NOT INCLUDED WITH BASE PRICE. THE BUILDER RESERVES THE RIGHT TO IMPROVE THE PLANS BY REVISING THE SPECIFICATIONS AND DIMENSIONS WITHOUT NOTICE.

THESE PLANS ARE THE PRIVATE PROPERTY OF PINE HILL BUILDING CO., LLC. ANY USE OR REPRODUCTION OF THESE PLANS, IN PART OR WHOLE, WITHOUT THE EXPRESSED WRITTEN CONSENT OF PINE HILL BUILDING CO., LLC. IS STRICTLY PROHIBITED.

Asheville Plan Information	
FIRST FLOOR	1141
SECOND FLOOR	1451
GARAGE S.F.	458